



Capability Statement

**Laser Electrical & Communications
Penrith (02) 4722 5255**



Our Story

Laser Electrical & Communications Penrith is a specialist project company working in the commercial sector performing new construction, refurbishments, and alterations & additions throughout Greater Sydney, Blue Mountains and Wollongong areas.

After starting with the company some 15 years ago, Benjamin Snowball and Christopher Lauer purchased the business from the previous owners, upholding the same high standards and continuing the reputation the business has been renowned for over the last 30 years.

The success and longevity of the business stems from the team culture created and maintained by the staff.





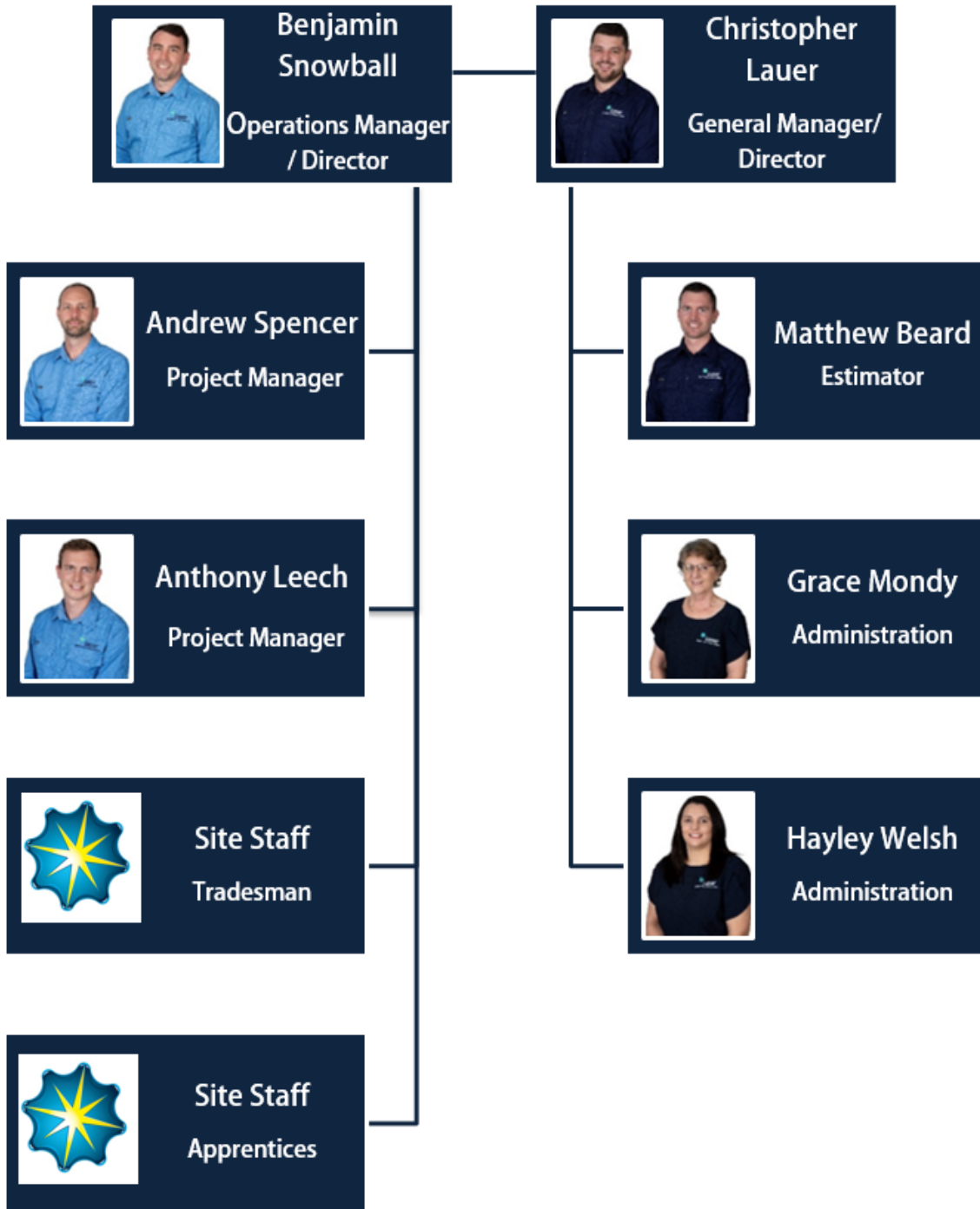
Our Mission

Laser Electrical & Communications Penrith only accepts a high level of workmanship from our suppliers, site staff and management team, offering the highest industry standards allowing us to provide our clients with a seamless project experience when building. Our enthusiastic and well-presented staff are ready and willing to outperform the competition and bring your project in on-time and under budget.





Our Team





Our Services

Laser Electrical & Communications Penrith specialise in all areas of the electrical industry. Our commitment to providing a professional service involves ongoing CM3 Contractor Pre-qualification with all of our staff undergoing background Police checks and Working with Children checks as standard. Some of the services we offer are,

- Design & Construction
- Electrical installations & maintenance
- Lighting Automation: C-Bus, Dynalite, DALI, Casambi
- Underground cable reticulation
- Communication and structured cabling
- Fibre optics installation and termination
- Access Control systems
- Security Alarm installation & monitoring
- Intercom systems, IP and analogue systems
- CCTV, IP and analogue systems
- Dry Fire, detection and alarm
- Audio Visual with Control Systems
- Public Address Systems: IP and analogue systems
- Documentation – Manuals, As Built drawing using Auto Cad Software



Our Projects

Education

Santa Sophia Catholic College, Box Hill.

Class Electrical

Complete site wide Communications for a new multi story school development for Catholic Education Diocese of Parramatta.

Thomas Hassell Anglican College.

Steve Watt Constructions

New construction and refurbishment including electrical, security, communications, dry fire, and C-bus lighting automation for Sydney Anglican Schools Corporation.

St Francis Catholic College, Edmonson Park.

FAL Constructions

New Construction - (Stage 4) Electrical, Communications, Security Access Control, PA, Audio Visual for Catholic Education Diocese of Wollongong.



Our Projects

Commercial

Hope Church, Leppington

Construction of a new Auditorium, Commercial Kitchen and Amenities, as well as refurbishment of an existing building.

Reitsma Constructions

The Bridge Church, Kirribilli.

Refurbishment of existing church including Communications and Dynalite lighting automation.

Reitsma Constructions

Brookvale Oval, Brookvale.

Communications Fibre Optic backbone cabling for broadcasting to the new stadium extension.

Xcite AV



Our Projects

Heritage

Rose Seidler House, Wahroonga.

Electrical refurbishment of the iconic building whilst preserving the building fabric. Works involved rewiring and retrofitting the existing light fittings. A new Casambi lighting control system was installed.

Gartner Rose

Admiralty House, Kirribilli.

Electrical, communications and fire upgrade to the Commercial Kitchen and Gatehouse.

Gartner Rose

Campbells Cove Promenade, Sydney City.

Refurbishment and installation of new Architectural Landscape lighting to the Promenade.

Gartner Rose



Systems

OCCUPATIONAL HEALTH AND SAFETY

Our commitment to Health and Safety is ongoing and the foundation for the business. Our WHS management system has been developed in house, customised with the framework provided by NECA's (National Electrical Contractors Association) approved documentation. By maintaining our CM3 certification we can ensure the protection of our staff, customers and the public. We are committed to weekly team WHS toolbox talks each Thursday morning at our office, where we encourage an open platform to discuss and learn as a team. We have also made the commitment to act upon the request of our workforce to undertake third party First Aid & CPR training for each employee whether it be an apprentice, tradesperson or management to ensure our staff feel comfortable and confident in the workplace.

JOB MANAGEMENT SOFTWARE

The advantage from being part of the Laser/ O'Brien Group means we have unique access to the Simpro cloud based project management software which allows us to retain and recall important information from each customer and site. It also gives us the ability to track the hours and materials for invoicing and review projects to ensure the client receives the highest quality from the initial tendering process through to project handover, and ongoing maintenance. All our site staff have direct but restricted access to the Simpro cloud ensuring technicians and foreman have the correct information with seamless transition of information from our management team.



Accreditations

- NECA Member
- CM3 Certified
- Inner Range Certified Installer
- Tecom Certified Installer
- Bosch Certified Installer
- ACRS Master Cabler
- Clipsal CBUS Approved Installer
- Clipsal EcoXpert
- Dynalite Approved Installer
- SAL Pixie Certified Installer
- Commscope Certified Installer





Details

COMPANY DETAILS

Company: Beta Sydney Pty Ltd

ABN: 51 633 680 458

Address: 1/18 Production Place, South Penrith, NSW 2750

Licences: Electrical 338944C, Security 105361, Communications A040056

Insurances: Workers Compensation, Public Liability Value \$20,000,000

CONTACT DETAILS - General enquiries

Email: penrith@laserelectrical.com.au

Phone: 02 4722 5255

CONTACT DETAILS - Accounts and administration

Email: accounts@betasydney.com.au

Phone: 02 4722 5255

Find more on our website

<https://penrith.laserelectrical.com.au/>

SUBSIDIARIES

An integral part of the company is Beta Fire & Security a subsidiary business carrying out simple alterations, existing system audits, design and construct installations, and ongoing monitoring and maintenance of sites throughout the Sydney basin.

